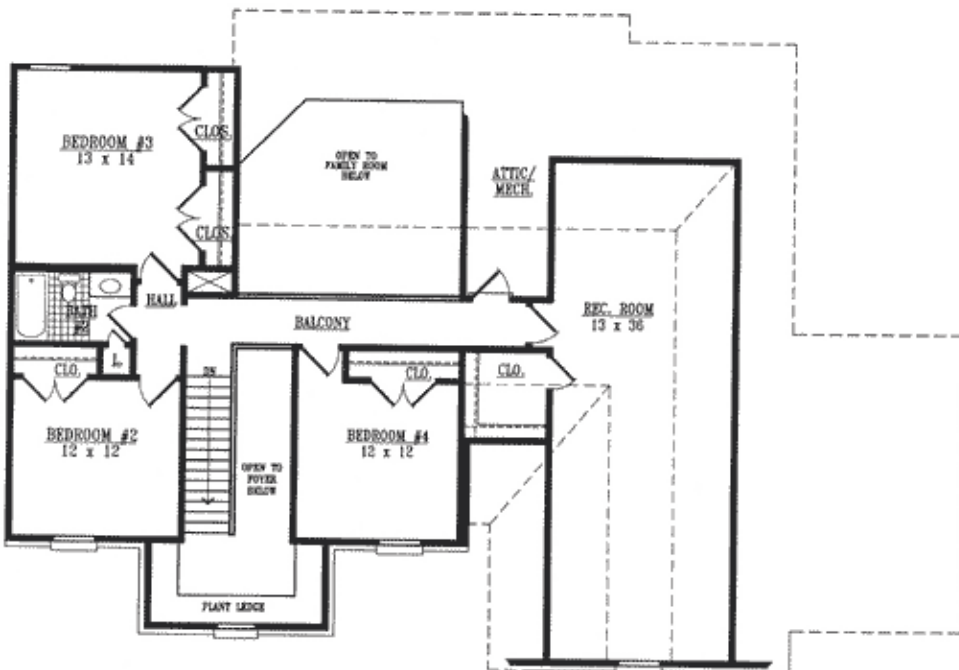
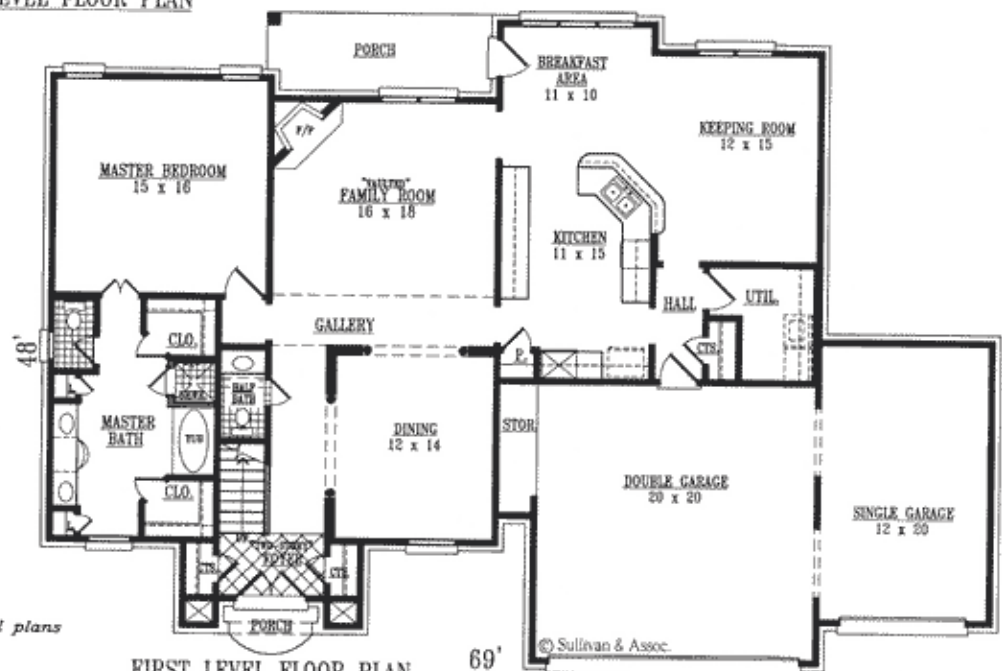




GREENBRIAR II WITH THREE-CAR GARAGE



SQUARE FOOTAGE
 1801 HEATED DOWN
 1403 HEATED UP
 737 GARAGE & STORAGE
 102 FRONT & REAR PORCHES
 3204 TOTAL HEATED AREA
 3941 TOTAL ENCLOSED AREA
 4043 TOTAL UNDER ROOF



Artist's conceptions, all plans subject to change.
 JCS 7-26-2005

© Sullivan & Assoc.

PLAN NO. 1800-1403-857-FT T&T